

SOLD



2/1211 Gold Coast Highway, Palm Beach

Dreaming of your very own beachside residence? A rare opportunity on exclusive Jefferson Lane has come to market! With this stylishly appointed ground floor levelled two-bedroom unit situated mere footsteps away from the shoreline of pristine Palm Beach. Offering the best of coastal living in one of the Gold Coast's most sought-after seaside addresses, this unit represents an extremely unique opportunity for the avid investor or savvy first home buyer.

It is an amazing and charm filled unit positioned in stunning Palm Beach on the highly acclaimed Southern end of the Gold Coast.

...

2 1 1

Price: \$906,000

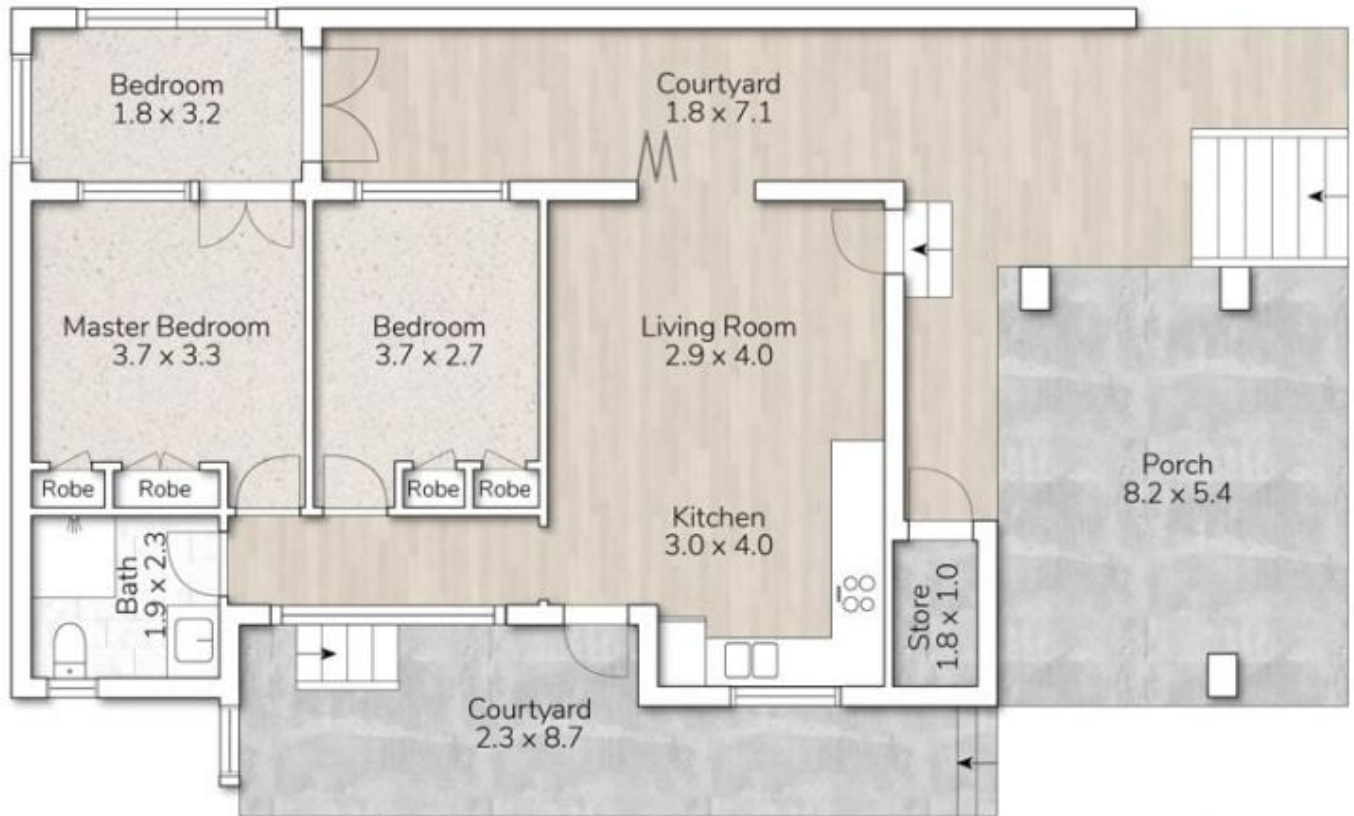
View: <https://remaxpropertycentre.com.au/7350320>

Danny Woolbank

M 0414 946 127

RE/MAX Property Centre





2-222 JEFFERSON LANE, PALM BEACH

This floor plan is for marketing purposes only. Dimensions and layout are approximate. Mountfort Media gives no guarantee or warranty over the accuracy of this plan.

INTERNAL AREA:	640P	
EXTERNAL AREA:	726P	
TOTAL AREA:	1366P	
		
3	1	1