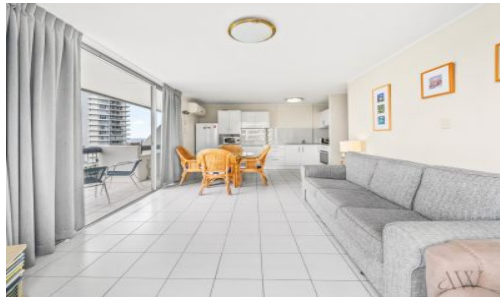


SOLD



601/2 Queensland Avenue, Broadbeach

This fantastic North facing unit is within walking distance of pristine patrolled beaches, Broadbeach entertainment precinct with cafes and restaurants, Pacific Fair, Gold Coast Convention Centre, the Star Casino and also the light rail. With Kurrawa Park across the road your amazing view to the water will be left untouched.

Whether you're wanting to live in and enjoy the beachside lifestyle or looking for an investment with good returns and opportunity for growth and development potential, this is an opportunity not to be missed. This top floor unit comprises of two large bedrooms, both with balconies, one bathroom and a large open plan living with a galley style kitchen. Large sliding doors open on to the North facing balcony where you can enjoy beautiful Northern skyline views and ocean views. ...

...

2  1  1 

Price: \$620,000

View: <https://remaxpropertycentre.com.au/7301102>

Alex Wohler

M 0490 320 818

RE/MAX Property Centre





INTERNAL : 66m²
 EXTERNAL : 17m²
 TOTAL : 83m²

THE FLOOR PLAN IS NOT TO SCALE; MEASUREMENTS ARE INDICATIVE AND IN FEET. ALL FEATURES INCLUDED IN THIS 2D PLAN ARE FOR INSPIRATION PURPOSES ONLY.
 THIS IS NOT AN EXACT REPLICA OF THE PROPERTY OR THE POSITION OF EXTERIOR ELEMENTS. PLANS SHOULD NOT BE RELIED ON. INTERESTED PARTIES SHOULD MAKE AND RELY ON THEIR OWN ENQUIRIES