

SOLD



12 Echlin Street, Labrador

WOW - You had better be quick for this property. Conveniently located just a short stroll to The Broadwater, Chirn Park's many cafes, restaurants, bars and shops - with Southport High School, Labrador Primary School, Major Shopping Centres, Hospitals and Griffith University close by.

Immaculate and currently occupied as dual living - this home has many special features.

- * Recently painted inside and out.
- * Spacious open plan living complete with solid timber floors and air conditioning.
- * Separate dining room opening on the full length entertainment deck....

...

4  2  2 

Price: \$1,290,000

View: <https://remaxpropertycentre.com.au/6611565>

Danny Woolbank
M 0414 946 127



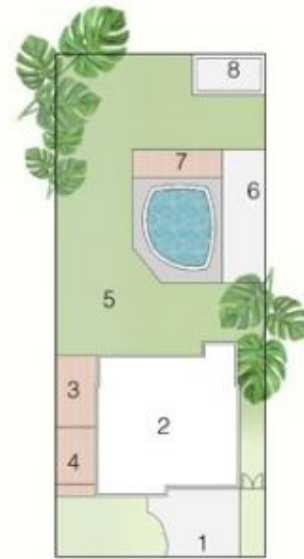
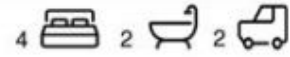
KB Seo
0431 142 818



RE/MAX Property Centre

12 Echlin Street, Labrador

Internal: 181 m² | External: 109 m² | Total: 290 m² | Land Size: 1012 m²



LEGEND

- 1- Driveway/ Echlin Street
- 2- Two Storey Residence
- 3- Covered Alfresco: 12 m²
- 4- Fire Pit Seating Area: 16 m²
- 5- Yard
- 6- Caravan Parking
- 7- Pool Deck
- 8- Storage



Danny Woolbank
0414 946 127

Whilst every effort has been undertaken for 100% accuracy, plans should not be relied on solely.
Sizes and dimensions are approximate and actual may vary.
Floor Plan is not to scale and measurements are in metres.

BIANCO
DESIGN CO.