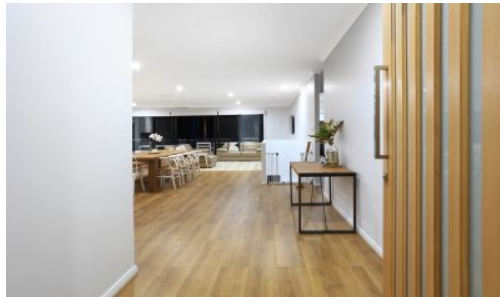


SOLD



14 Wattlebird Crescent, Gilston

You will be highly impressed from the moment you walk through the timber pivot front door with the expansive open plan living area, high ceilings and the abundance of natural light.

Conveniently located close many private and public schools, local shopping villages, easy access to the M1 and just a short drive to Robina Town Centre, train station and hospitals. With the potential for dual living downstairs this 2 year old family home offers many quality features.

Main level -

- * Spacious open plan living and dining area.
- * First class designer kitchen featuring - Stone bench tops, soft close doors and extended...

5 3 2

Price: \$959,000

View: <https://remaxpropertycentre.com.au/5933438>

Danny Woolbank

M 0414 946 127



KB Seo

0431 142 818



RE/MAX Property Centre

Shop 6/110 Monaco Street

07 5629 7735

0 1 2 3 4 5



Internal Entry Level 230m²
 Int'l Lower Level 74.1m²
 Side Garage 5 x 3.8 / 19m²
 Combined 323.1m² or 34.8sq

Alfresco Areas 56.6m²
 Portico 6.2m²
Total Floor Area 385.9m²



Land Size 814m²
 Ceiling Height 2.7m



14 WATTLEBIRD CRESCENT, GILSTON 4211
RE/MAX Property Centre