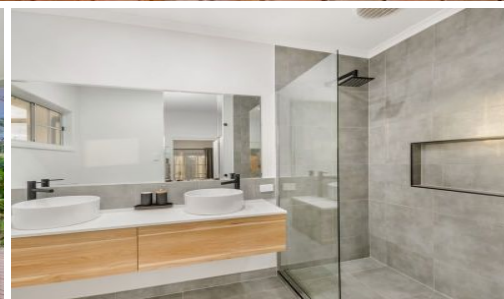


**SOLD**



## 95 Mountview Drive, Toonpan

Away from it all but only a 30-minute drive to the CBD. This stunning modern take on a Queenslander style house was only completed in 2017. The owners have capitalized on an opportunity to move down south and now our beautiful 19.7 acre property with amazing views of Mount Elliot, a fantastic bore and a big shed can be your family's dream home. No expense was spared in the construction of this modern masterpiece straight out of a home improvement magazine. You will love the large kitchen featuring stone island benches, a commercial six burner stove, a huge walk-in pantry and a servery window that you will love when entertaining on the hardwood timber deck. With beautiful sea-breezes and views of Mount Elliot plus fans, lights and even a spot for the tv, you'll never go inside....

Every acreage property needs to have 3 things in place...

Number 1, a big shed. We've got a five-bay council approved shed that includes storage shelves, lights and even fans. The

3 2 5

**Price:** Undisclosed

**View:** <https://remaxpropertycentre.com.au/5713367>

**Danny Woolbank**

**M 0414 946 127**

RE/MAX Property Centre



Shop 6/110 Monaco Street

07 5629 7735

Beautiful lawn surrounding...



FLOOR PLAN

95 Mountview Drive Toonpan