

SOLD



20 Lamington Road, West End

To get the best idea of what this home has to offer, be sure to watch our television quality video.

For many families, the ultimate Townsville house is a beautiful Heritage Queenslander in West End which has been modernized by the addition of a beautiful ensuite and a large deck for entertaining. Our team is extremely proud to present 20 Leamington Road in West End.

This stunning showpiece home has been lovingly cared for and updated by the current owners. An opportunity to move overseas has presented itself to the owners and this beautiful property, which they intended to keep forever, is now perfectly prepared for your family.

...

3 2 2

Price: Undisclosed

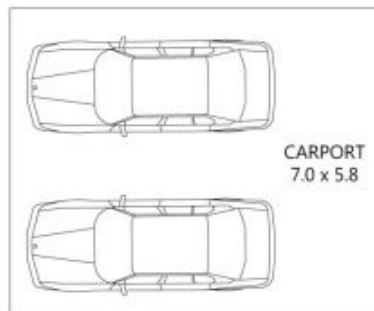
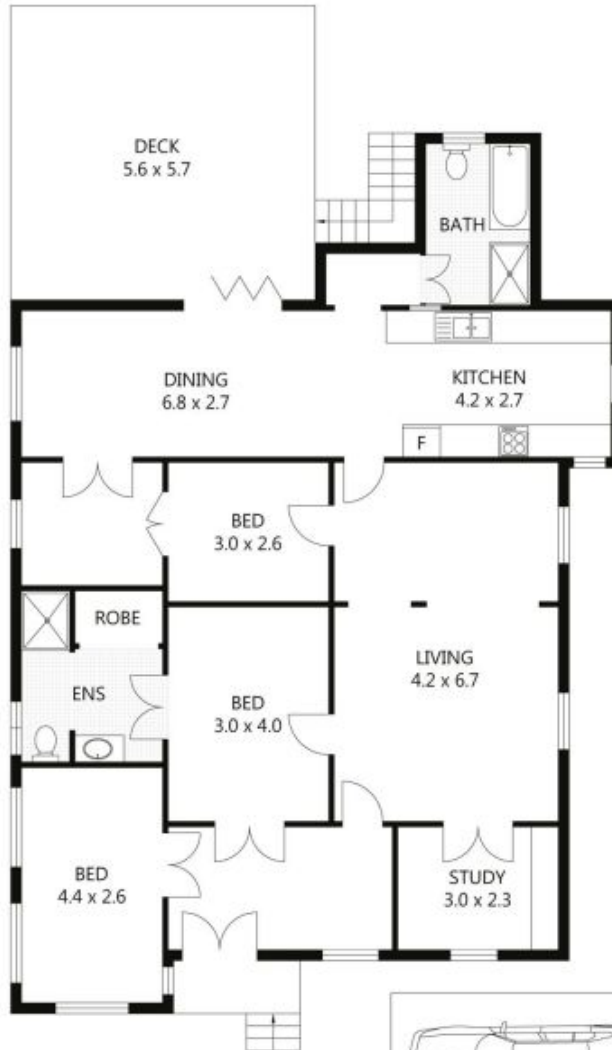
View: <https://remaxpropertycentre.com.au/5713366>

Danny Woolbank

M 0414 946 127

RE/MAX Property Centre





Scale in metres. Indicative only. Dimensions are approximate. All information contained herein is gathered from sources we believe to be reliable. However we cannot guarantee its accuracy and interested parties should rely on their own enquiries.

TOTAL UNDER ROOF	-	233m ²
RESIDENCE	-	125m ²
CARPORT	-	41m ²
STORAGE	-	35m ²
DECK	-	32m ²

20 Lamington Road, West End