

SOLD



55 Maryland Drive, Deeragun

When it comes to family homes you don't need to look much further with everything you need and more situated right here at 55 Maryland Drive in Oakdale Heights. The quality construction was built in 2015 with the purpose for lifestyle, durability and accessibility to all of Townsville's great offerings. Situated on an elevated block with so much to offer and in close proximity to the main highway, you will love being just a short drive away from where you need to go. (WATCH VIDEO LINK COMING SOON)

The large open plan living area has plenty of room for your family to spread out and indulge in their own space. The large kitchen features miles of bench space, plenty of storage and stainless steel appliances. All the bedrooms are fresh and spacious with built in...

4  2  2 

Price: Undisclosed

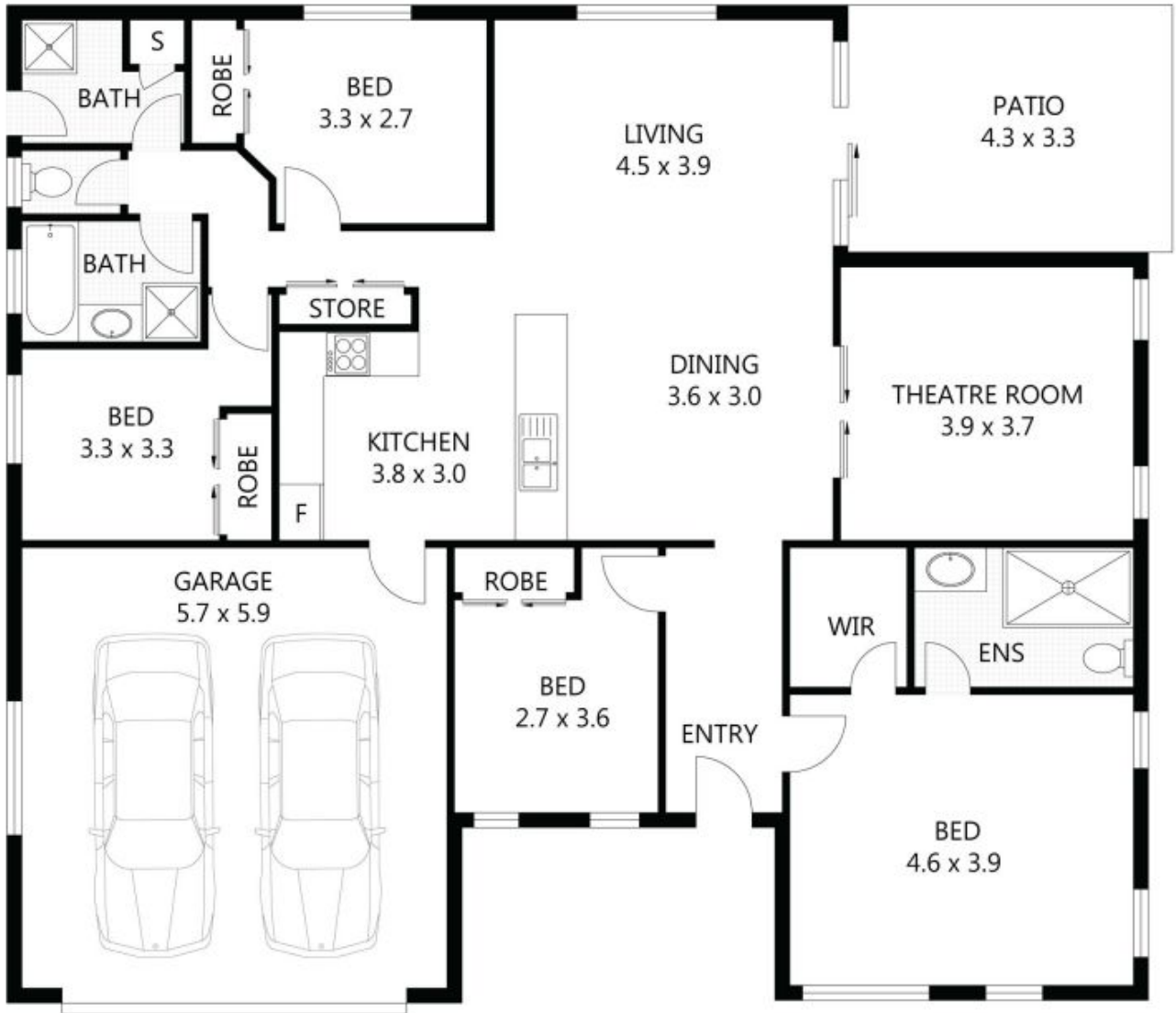
View: <https://remaxpropertycentre.com.au/5713341>

Danny Woolbank

M 0414 946 127

RE/MAX Property Centre





Scale in metres. Indicative only. Dimensions are approximate. All information contained herein is gathered from sources we believe to be reliable. However we cannot guarantee its accuracy and interested parties should rely on their own enquiries.

Garage	-	34m ²
Patio	-	14m ²
Residence	-	134m ²

55 Maryland Drive, Deeragun