

SOLD



46 Northshore Circuit, Idalia

When it comes to family homes it seems that everybody wants to be both close to the city, and in a quiet modern leafy suburb next to the river. With that in mind, Sean and I are very excited to present a fantastic residence on a 675m² block on Northshore Circuit in Idalia. If you are looking for a fantastic location you just can't buy better than this home. Your family will love taking evening strolls along the Ross River, and being able to get to work in the city in just a few minutes.

The large open plan living area has the kitchen central and plenty of room for your family to spread out. All the bedrooms are freshly carpeted and newly painted with a large walk in wardrobe to the master, which also includes split system air conditioning and a tidy ...

4 2 2

Price: Undisclosed

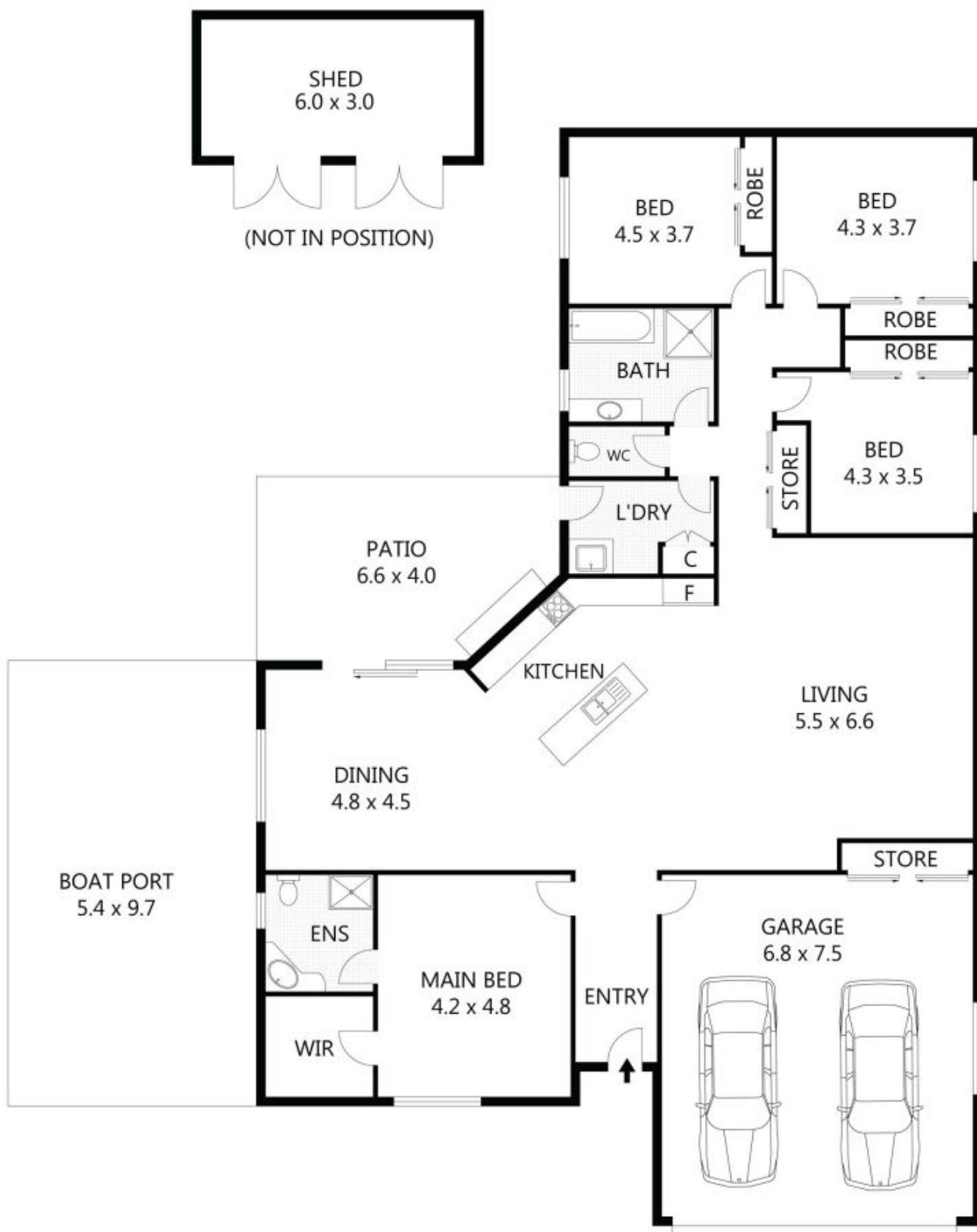
View: <https://remaxpropertycentre.com.au/5713332>

Danny Woolbank

M 0414 946 127

RE/MAX Property Centre





Scale in metres. Indicative only. Dimensions are approximate. All information contained herein is gathered from sources we believe to be reliable. However we cannot guarantee its accuracy and interested parties should rely on their own enquiries.

PATIO	-	25m ²
SHED	-	18m ²
BOAT PORT	-	52m ²
GARAGE	-	51m ²
RESIDENCE	-	217m ²

46 Northshore Circuit, Idalia