

**SOLD**



## 30 Sonia Street, Rasmussen

You will love the space your family can have in this legal height home built in 1985 that similar properties in this price range just can't offer. Here you will find tiles throughout the downstairs and polished hardwood floors upstairs including all bedrooms. You can enjoy multiple bathrooms that have all the fixtures and fittings you need so your family can get ready for evenings out and never be late. The kitchen features plenty of storage space and offers the family chef miles of bench space with a view of the block. Get off the rent cycle, you just simply won't believe the value you can pick up here. There are split system air-conditioners throughout the home to keep your family cool all year round and the fenced 801m2 block has plenty of yard space for your kids and pets to pl...

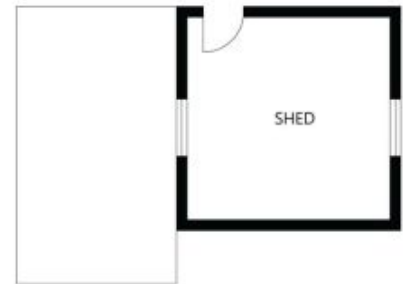
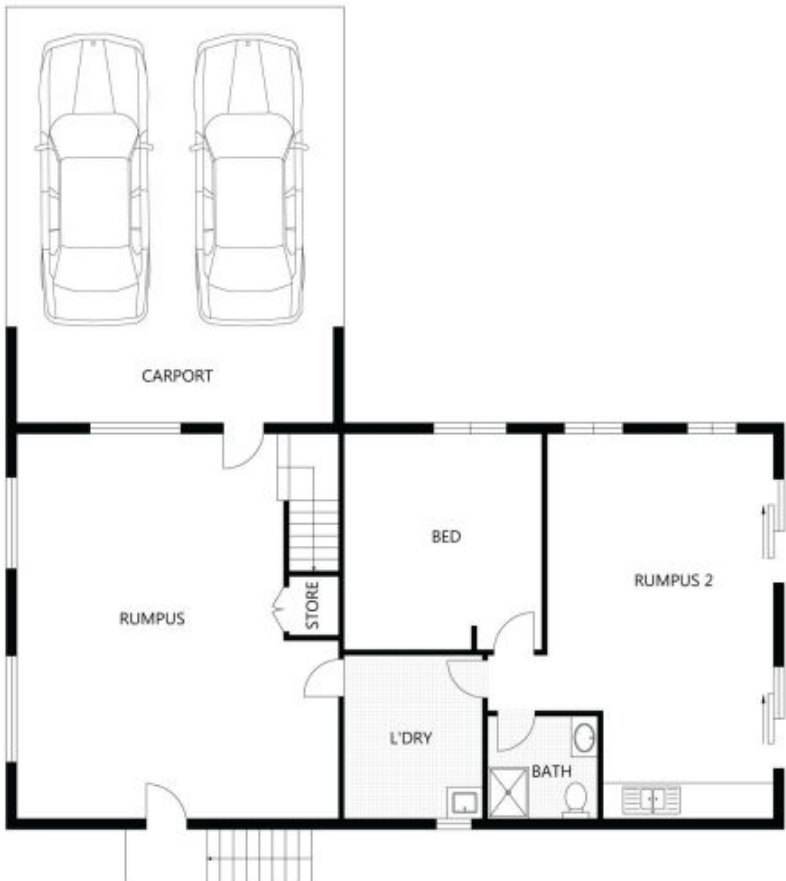
4 2 4

**Price:** Undisclosed  
**View:** <https://remaxpropertycentre.com.au/5713327>

**Danny Woolbank**  
**M 0414 946 127**

RE/MAX Property Centre





Scale in metres. Indicative only. Dimensions are approximate. All information contained herein is gathered from sources we believe to be reliable. However we cannot guarantee its accuracy and interested parties should rely on their own enquiries.

Balcony	-	11m <sup>2</sup>
Carport	-	49m <sup>2</sup>
Shed	-	14m <sup>2</sup>
Covered Patio	-	36m <sup>2</sup>
Residence	-	204m <sup>2</sup>

# 30 Sonia Street, Rasmussen