

SOLD



23 Lily Street, Hermit Park

What makes a house a home? A roof over your head? A special feeling? Love. Our traditional home at 23 Lily Street in Hyde Park has a special quality. There are charming heritage features throughout the home and wonderful modern upgrades like split system air conditioning in the main living area. Original pine and hardwood floors throughout the home give it a timeless sense of style. There are beautiful casement windows and a tiled back verandah which is perfect for barbecuing on warm summer evenings.

There is plenty of space to park your car under the carport on the low maintenance 387 square metre block but you might not need to use it that often...The location is fantastic, giving you the ability to walk to shops, or take a stroll down the nearby Ross River walkin...

3  1  1 

Price: Undisclosed

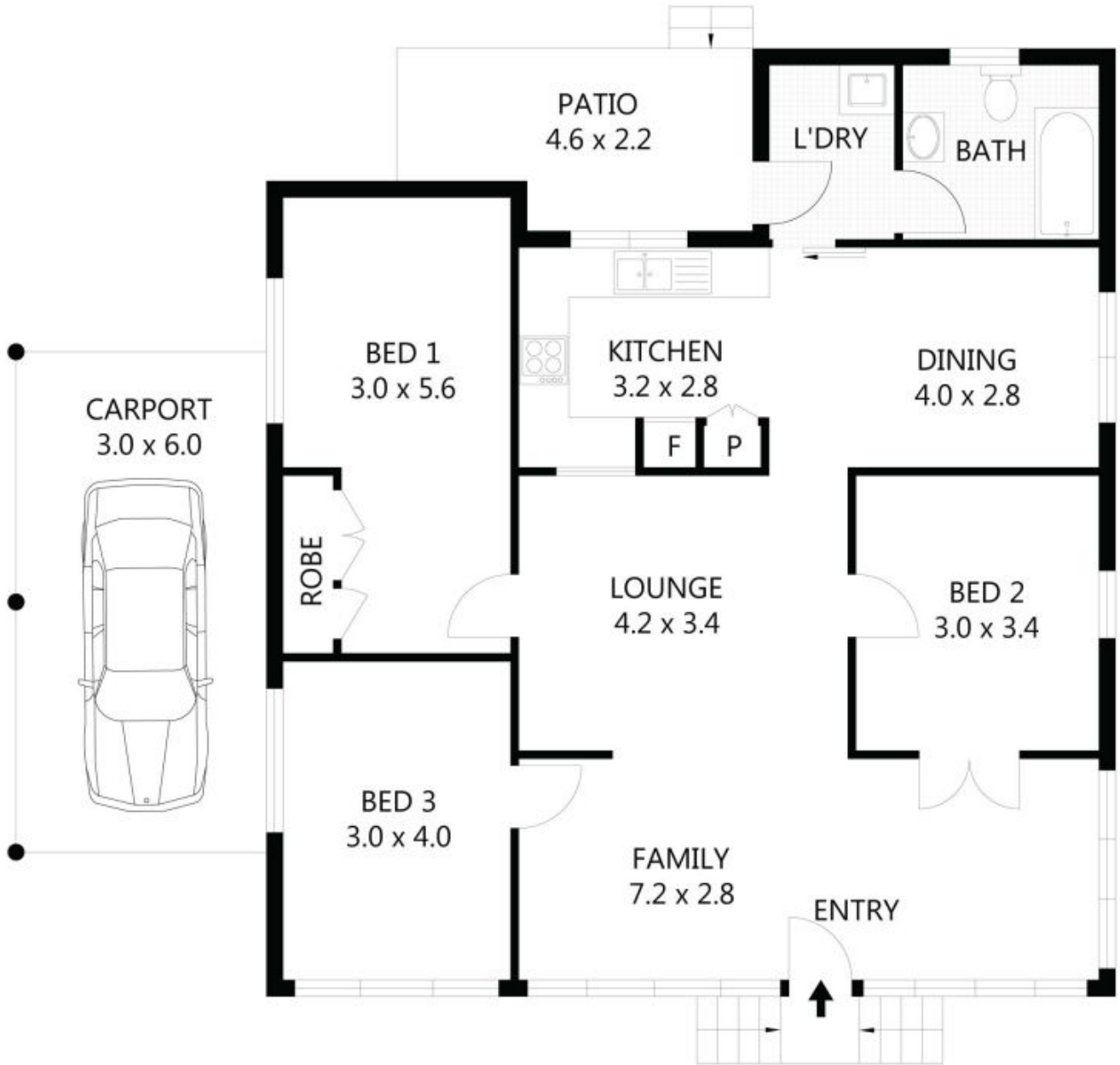
View: <https://remaxpropertycentre.com.au/5713324>

Danny Woolbank

M 0414 946 127

RE/MAX Property Centre





Scale in metres. Indicative only. Dimensions are approximate. All information contained herein is gathered from sources we believe to be reliable. However we cannot guarantee its accuracy and interested parties should rely on their own enquiries.

Patio	-	8m ²
Carport	-	18m ²
Residence	-	96m ²

23 Lily Street, Hermit Park