

SOLD



84 Poinsettia Drive, Bohle Plains

Why build? 84 Poinsettia Drive was recently built by Grady Homes and is in immaculate condition. This beautiful property has all the features you would want in a modern 4 bedroom 2 bathroom house including an amazing open plan kitchen with stone bench tops, 4 burner gas stove and a walk in pantry. The large media room is perfect for evenings with the family where you can watch all your favourite movies in complete comfort. All bedrooms are well sized with built in robes and split system air-conditioning. The master suite has a walk in robe and ensuite with two shower heads and direct access to the patio- perfect for weekend barbecues with friends and family.

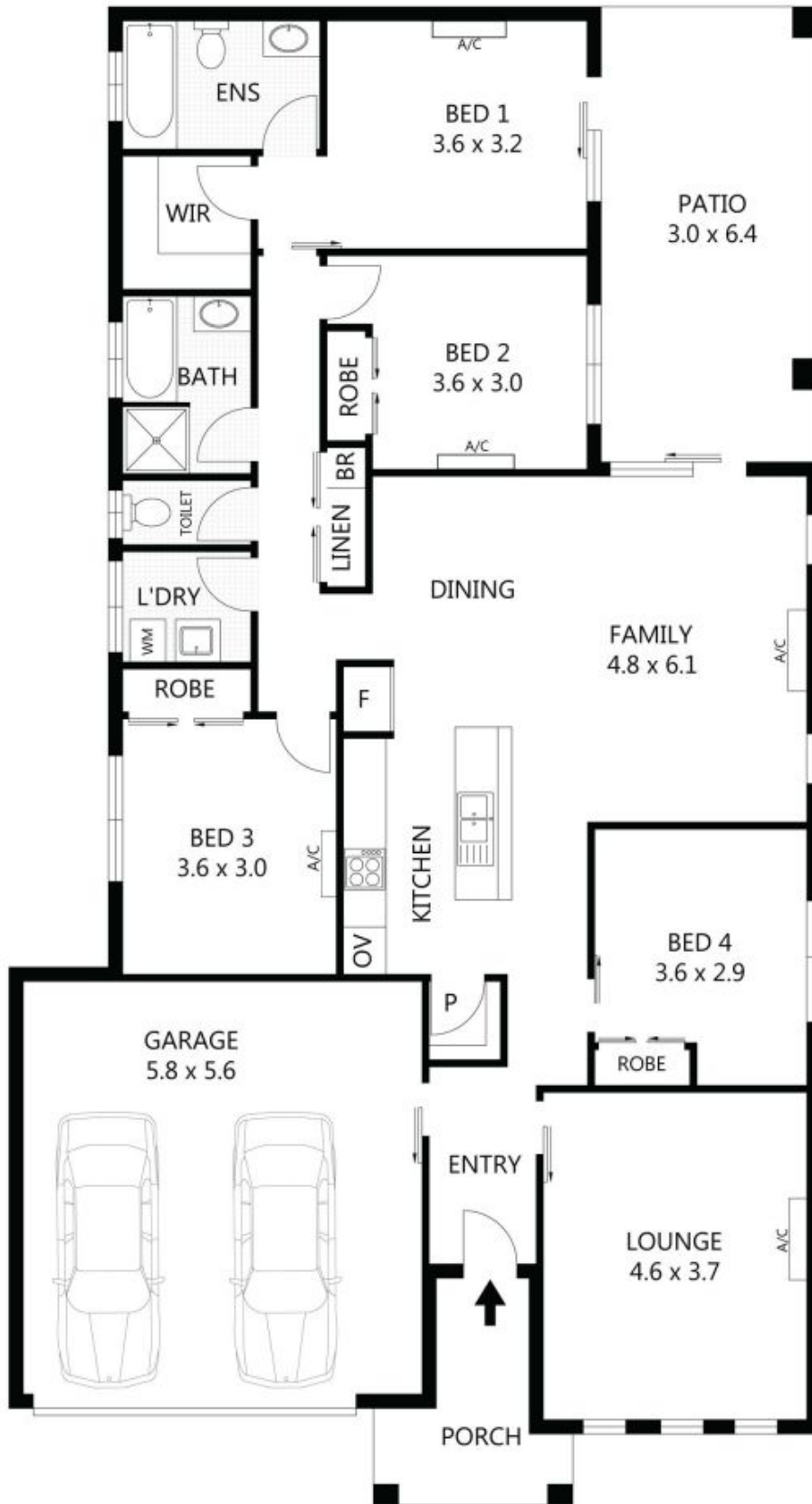
...

4  2  2 

Price: Undisclosed
View: <https://remaxpropertycentre.com.au/5713308>

Danny Woolbank
M 0414 946 127
RE/MAX Property Centre





Scale in metres. Indicative only. Dimensions are approximate. All information contained herein is gathered from sources we believe to be reliable. However we cannot guarantee its accuracy and interested parties should rely on their own enquiries.

Residence	-	172m ²
Patio	-	20m ²
Porch	-	6m ²

84 Poinsettia Drive, Bohle Plains